

# Legend BP122 Large Sealed Bass Guitar or PA

By Jerry McNutt, Eminence Speaker LLC

50 Watts, F3 at 53 Hz

Run full range for Bass Guitar or High pass at 45 for PA use.



## Box Properties

--Description--

Name:

Type: Closed Box

Shape: Prism, square (optimum)

--Box Parameters--

Vb = 3.5 cu.ft

V(total) = 3.608 cu.ft

Qtc = 0.753

QL = 20

F3 = 52.99 Hz

Fill = normal

## Driver Properties

--Description--

Name: Legend BP122

Type: Standard one-way driver

Company: Eminence Speaker LLC USA

Comment: 12" Bass Guitar/Pro Woofer

--Configuration--

**No. of Drivers = 1**

--Mechanical Parameters--

Fs = 35.37 Hz

Qms = 9.26

Vas = 157.4 liters

Cms = 0.4 mm/N

Mms = 50.37 g

Rms = 1.21 kg/s

Xmax = 6.2 mm

Xmech = 12.4 mm

P-Dia = 258.9 mm

Sd = 532.4 sq.cm

P-Vd = 0.326 liters

--Electrical Parameters--

Qes = 0.57

Re = 5.66 ohms

Le = 0.84 mH

Z = 8 ohms

BL = 10.55 Tm

Pe = 250 watts

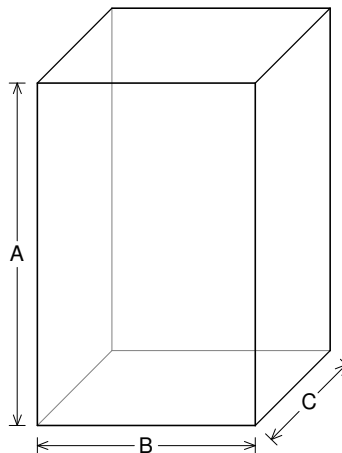
--Electromech. Parameters--

Qts = 0.54

no = 1.178 %

1-W SPL = 92.86 dB

2.83-V SPL = 94.36 dB



--External Dimensions--

A = 31.28 in

B = 19.91 in

C = 12.87 in

--Internal Dimensions--

A = 29.78 in

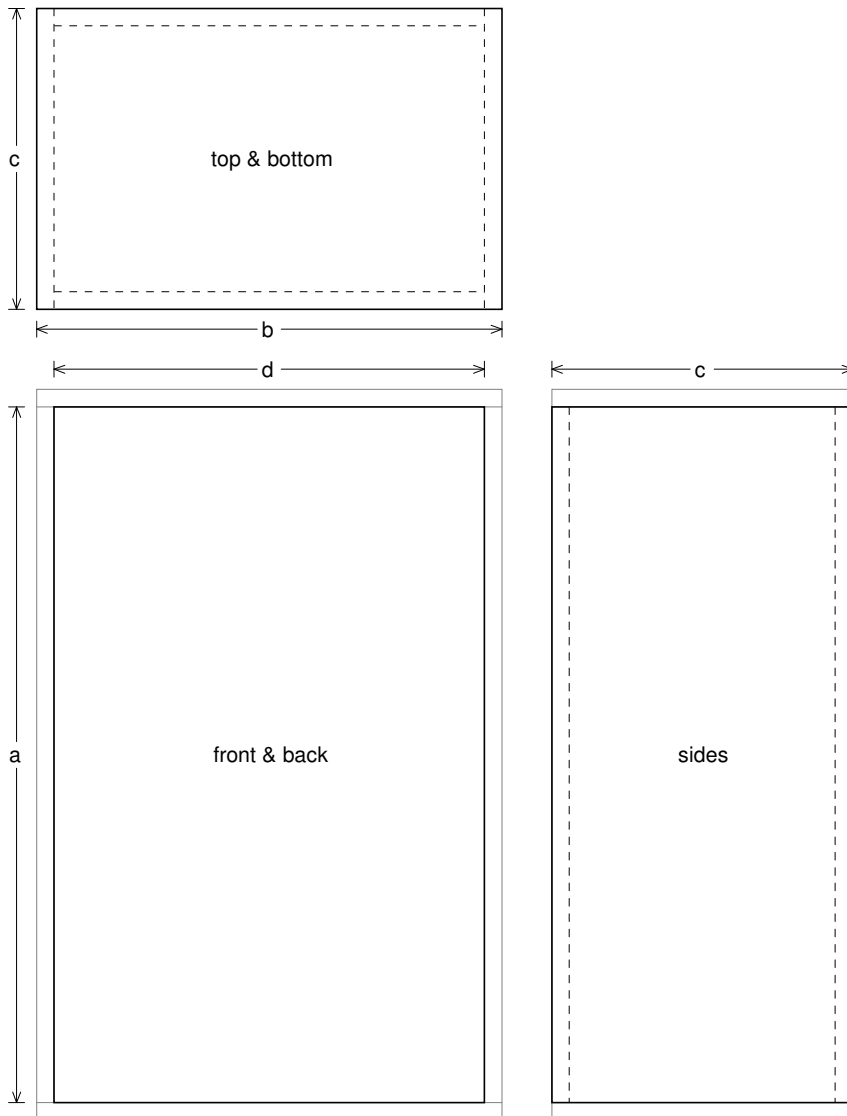
B = 18.41 in

C = 11.37 in

--Wall Thickness--

Front = 0.75 in

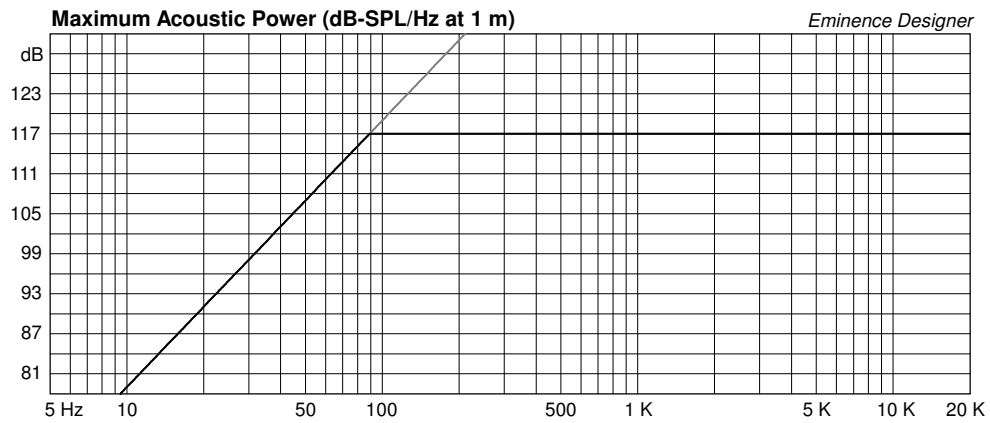
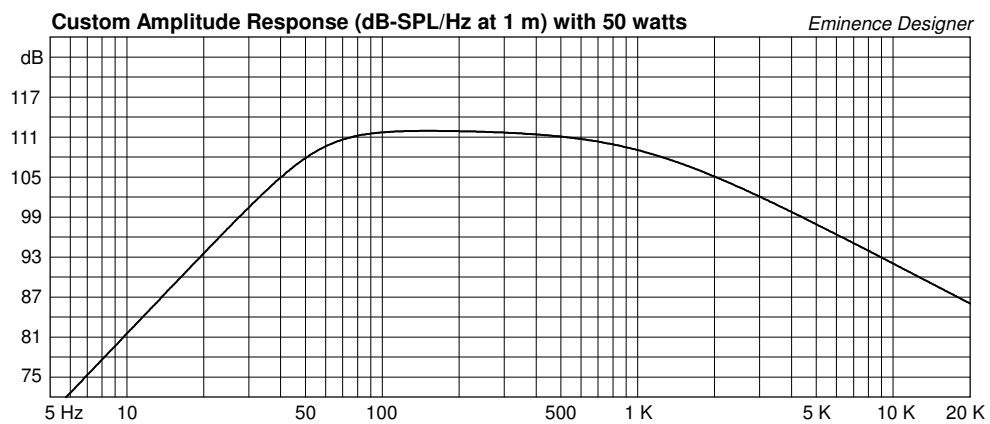
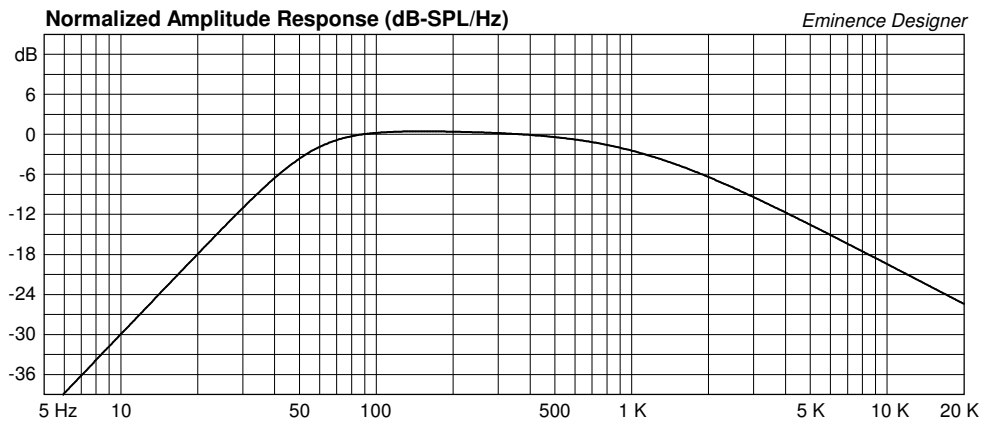
Side = 0.75 in

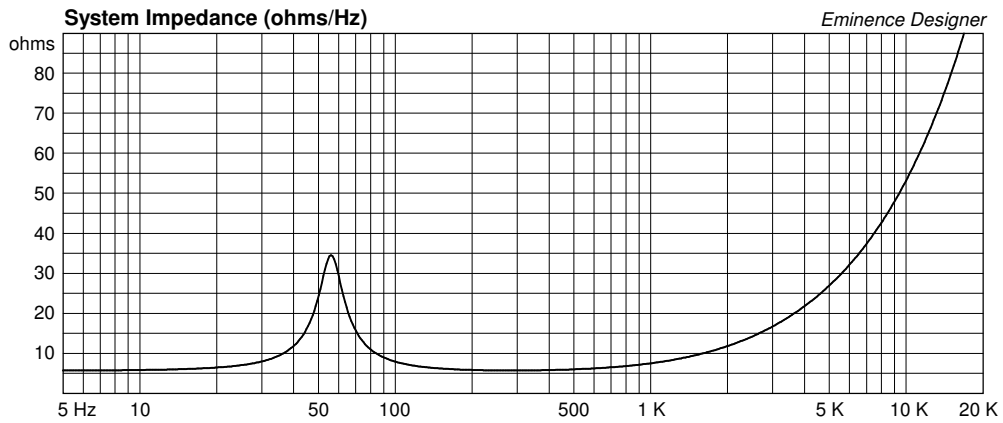
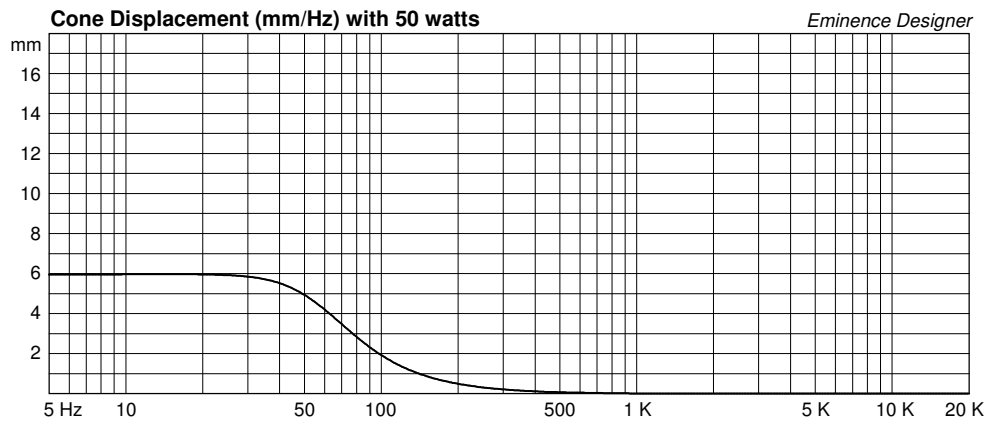
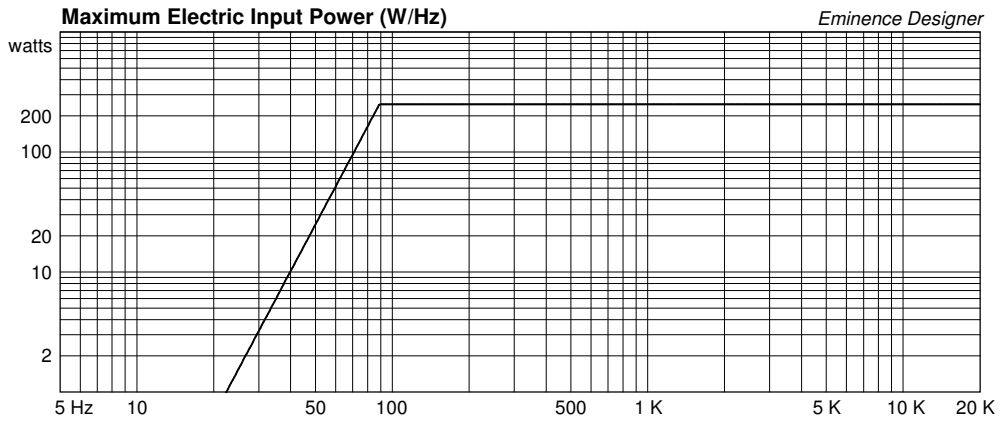


**Box Parts**

Box Shape: Optimum Square Prism  
1 Top, 1 Bottom: depth (c) = 12.87 in  
width (b) = 19.91, thickness = 0.75 in  
1 Front, 1 Back: height (a) = 29.78 in  
width (d) = 18.41, thickness = 0.75 in  
2 Sides: height (a) = 29.78 in  
depth (c) = 12.87, thickness = 0.75 in

--Driver Mounting--  
Mounting: Flush





# Legend BP122 Large Vented Bass Guitar or PA

By Jerry McNutt, Eminence Speaker LLC

100 Watts, F3 at 36 Hz

Run full range for Bass Guitar or High pass at 30 Hz for PA, DJ, or ProSound.



## Box Properties

--Description--

Name:

Type: Vented Box

Shape: Prism, square (optimum)

--Box Parameters--

Vb = 5 cu.ft

V(total) = 5.18 cu.ft

Fb = 37 Hz

QL = 7

F3 = 36.32 Hz

Fill = normal

--Vents--

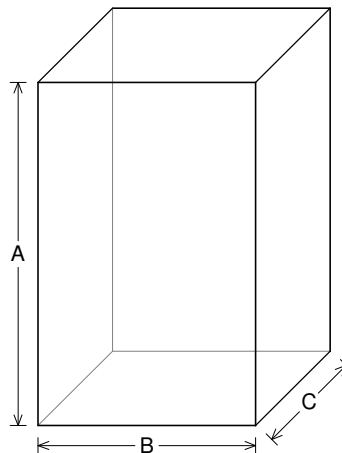
No. of Vents = 2

Vent shape = round

Vent ends = one flush

Dv = 4 in

Lv = 5.154 in



--External Dimensions--

A = 35.1 in

B = 22.26 in

C = 14.33 in

--Internal Dimensions--

A = 33.6 in

B = 20.76 in

C = 12.83 in

--Wall Thickness--

Front = 0.75 in

Side = 0.75 in

## Driver Properties

--Description--

Name: Legend BP122

Type: Standard one-way driver

Company: Eminence Speaker LLC USA

Comment: 12" Bass Guitar/Pro Woofer

--Configuration--

**No. of Drivers = 1**

--Mechanical Parameters--

Fs = 35.37 Hz

Qms = 9.26

Vas = 157.4 liters

Cms = 0.4 mm/N

Mms = 50.37 g

Rms = 1.21 kg/s

Xmax = 6.2 mm

Xmech = 12.4 mm

P-Dia = 258.9 mm

Sd = 532.4 sq.cm

P-Vd = 0.326 liters

--Electrical Parameters--

Qes = 0.57

Re = 5.66 ohms

Le = 0.84 mH

Z = 8 ohms

BL = 10.55 Tm

Pe = 250 watts

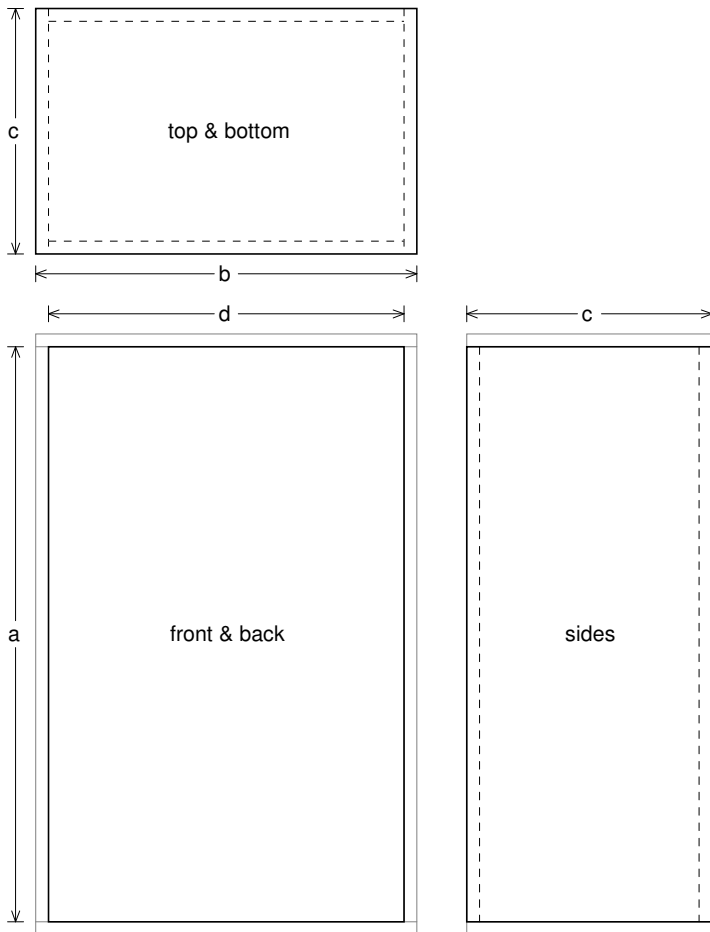
--Electromech. Parameters--

Qts = 0.54

no = 1.178 %

1-W SPL = 92.86 dB

2.83-V SPL = 94.36 dB



**Box Parts**

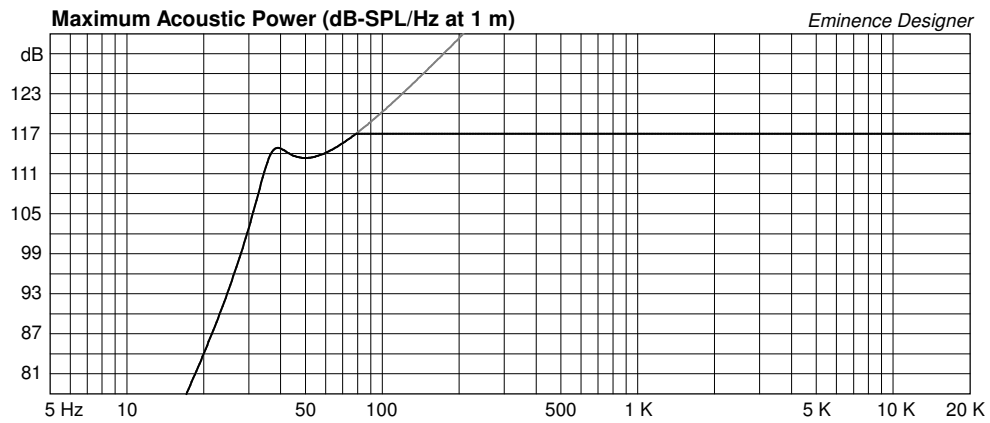
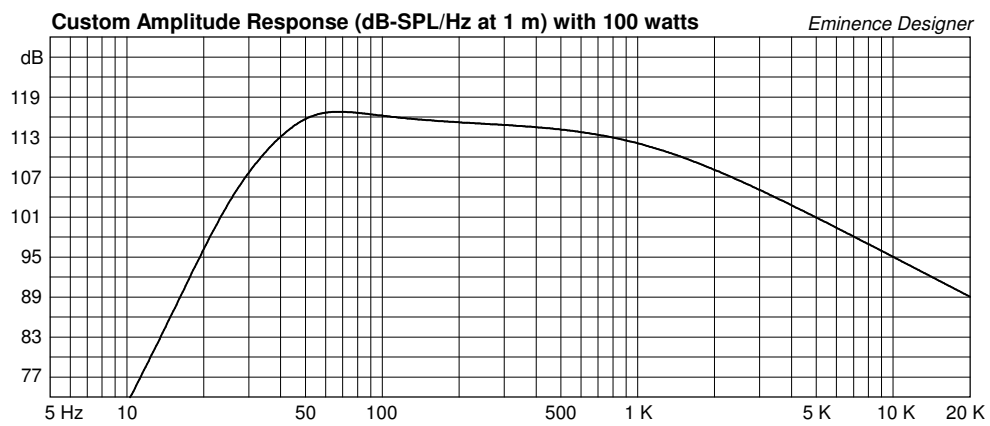
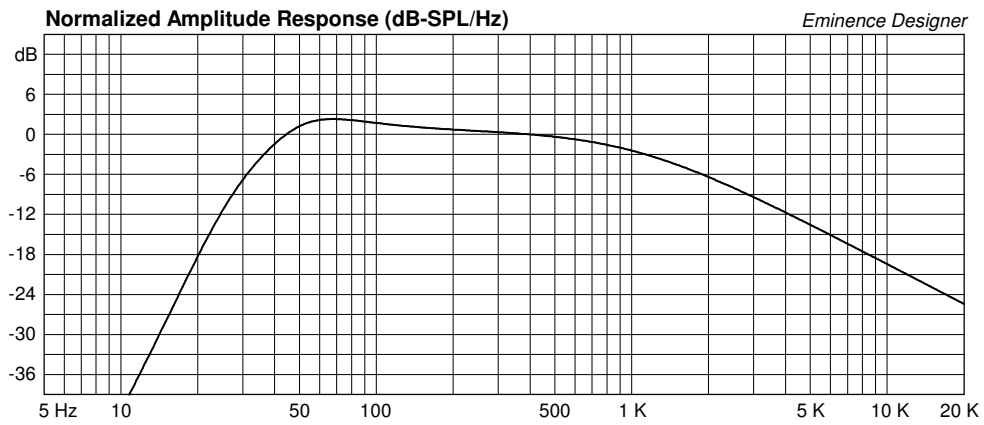
Box Shape: Optimum Square Prism  
1 Top, 1 Bottom: depth (c) = 14.33 in  
width (b) = 22.26, thickness = 0.75 in  
1 Front, 1 Back: height (a) = 33.6 in  
width (d) = 20.76, thickness = 0.75 in  
2 Sides: height (a) = 33.6 in  
depth (c) = 14.33, thickness = 0.75 in

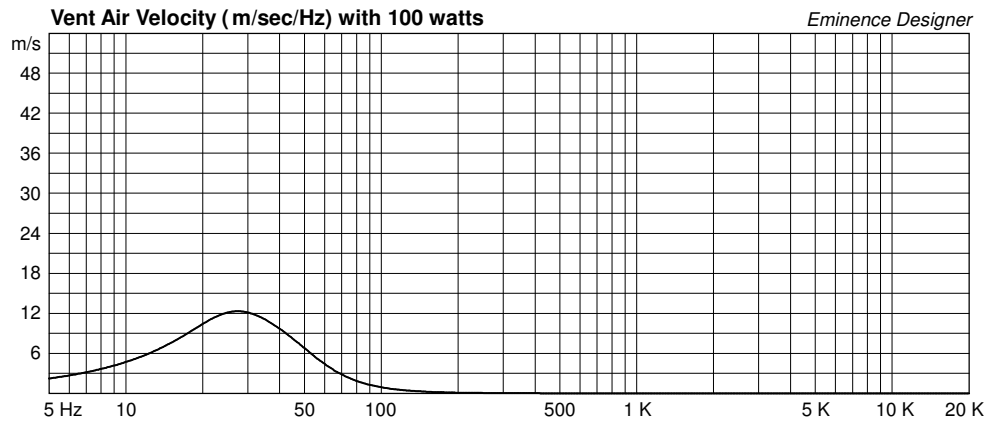
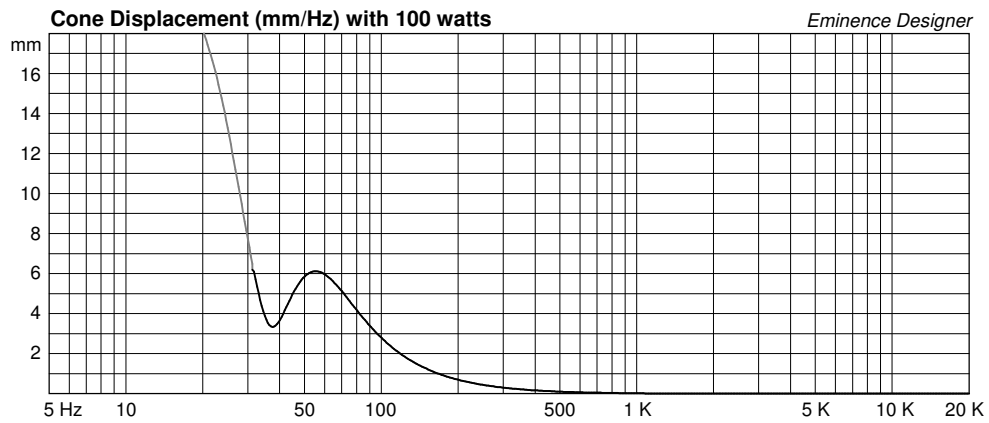
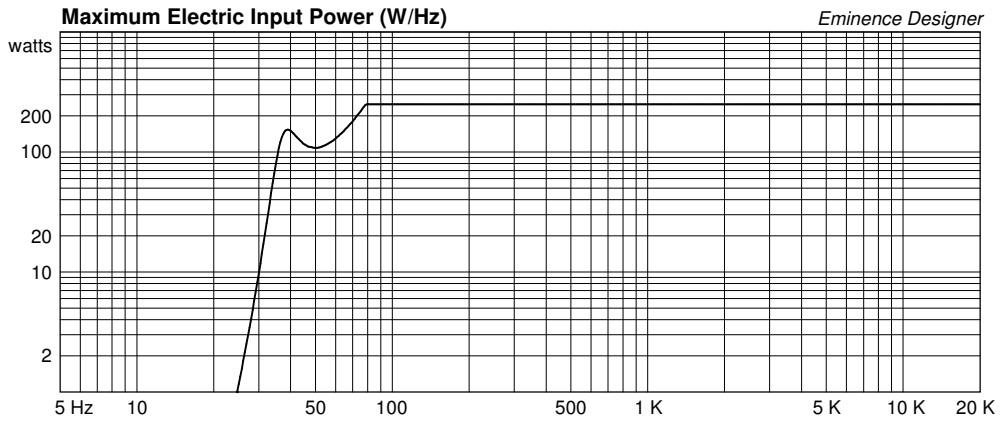
*--Vent Parts--*

2 Ducts: outside diameter (e) = 4.25 in  
inside diameter (g) = 4 in  
length (h) = 5.154 in

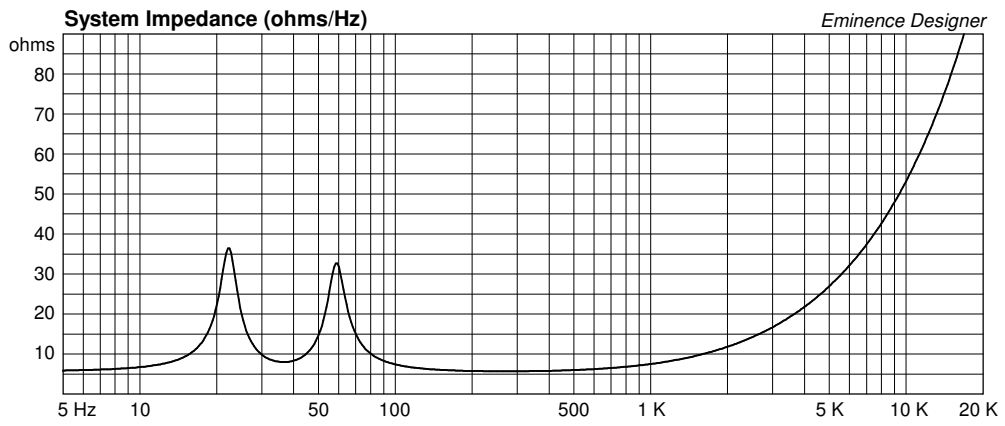
*--Driver Mounting--*

Mounting: Flush









# Legend BP122 Medium Sealed Bass Guitar or PA

By Jerry McNutt, Eminence Speaker LLC

100 Watts, F3 at 57 Hz

Run full range for Bass Guitar or High pass at 50 for PA use.



## Box Properties

--Description--

Name:

Type: Closed Box

Shape: Prism, square (optimum)

--Box Parameters--

Vb = 2 cu.ft

V(total) = 2.108 cu.ft

Qtc = 0.885

QL = 20

F3 = 56.95 Hz

Fill = normal

## Driver Properties

--Description--

Name: Legend BP122

Type: Standard one-way driver

Company: Eminence Speaker LLC USA

Comment: 12" Bass Guitar/Pro Woofer

--Configuration--

**No. of Drivers = 1**

--Mechanical Parameters--

Fs = 35.37 Hz

Qms = 9.26

Vas = 157.4 liters

Cms = 0.4 mm/N

Mms = 50.37 g

Rms = 1.21 kg/s

Xmax = 6.2 mm

Xmech = 12.4 mm

P-Dia = 258.9 mm

Sd = 532.4 sq.cm

P-Vd = 0.326 liters

--Electrical Parameters--

Qes = 0.57

Re = 5.66 ohms

Le = 0.84 mH

Z = 8 ohms

BL = 10.55 Tm

Pe = 250 watts

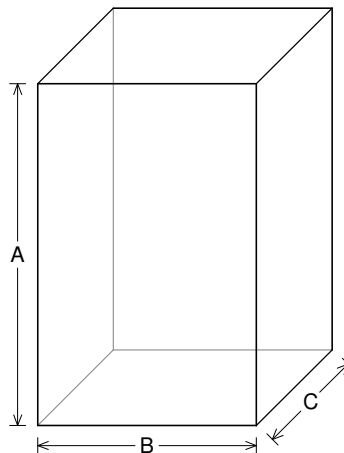
--Electromech. Parameters--

Qts = 0.54

no = 1.178 %

1-W SPL = 92.86 dB

2.83-V SPL = 94.36 dB



--External Dimensions--

A = 26.4 in

B = 16.89 in

C = 11.01 in

--Internal Dimensions--

A = 24.9 in

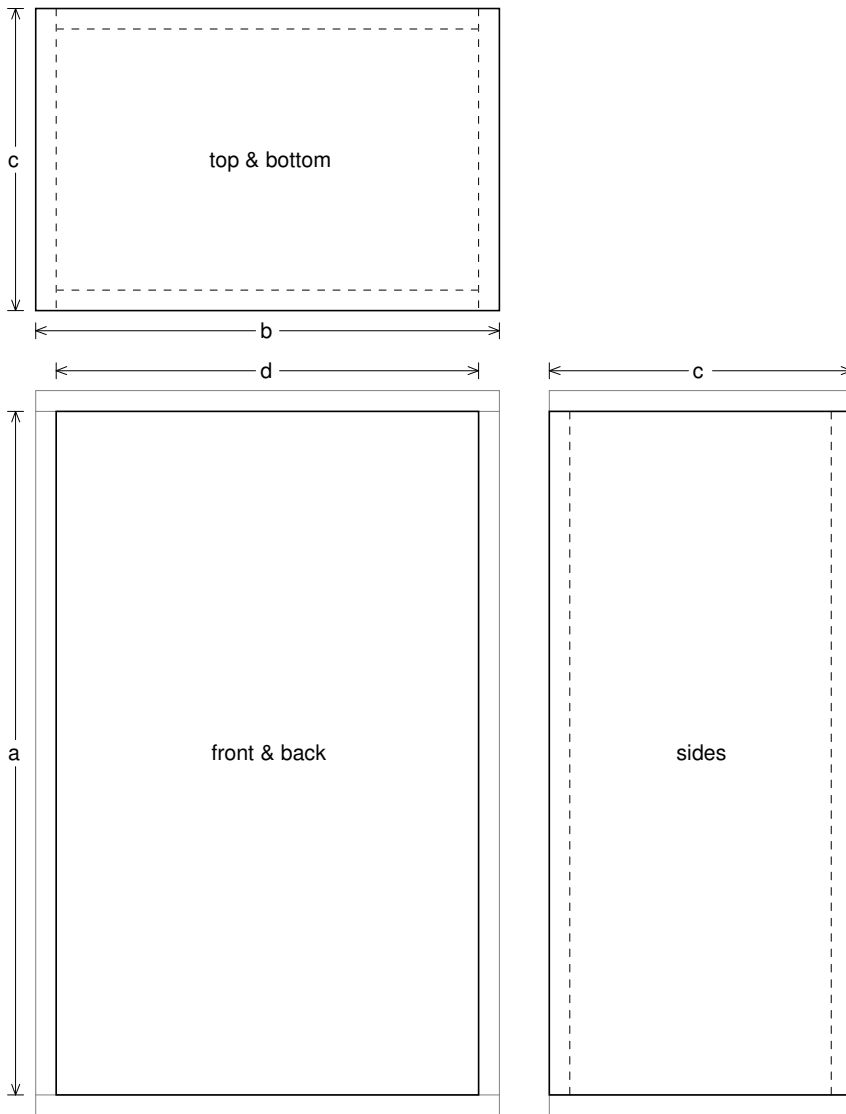
B = 15.39 in

C = 9.509 in

--Wall Thickness--

Front = 0.75 in

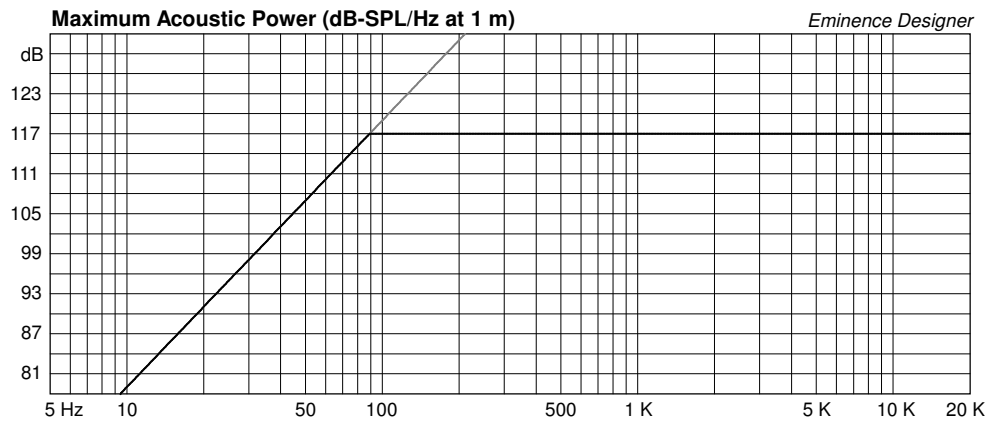
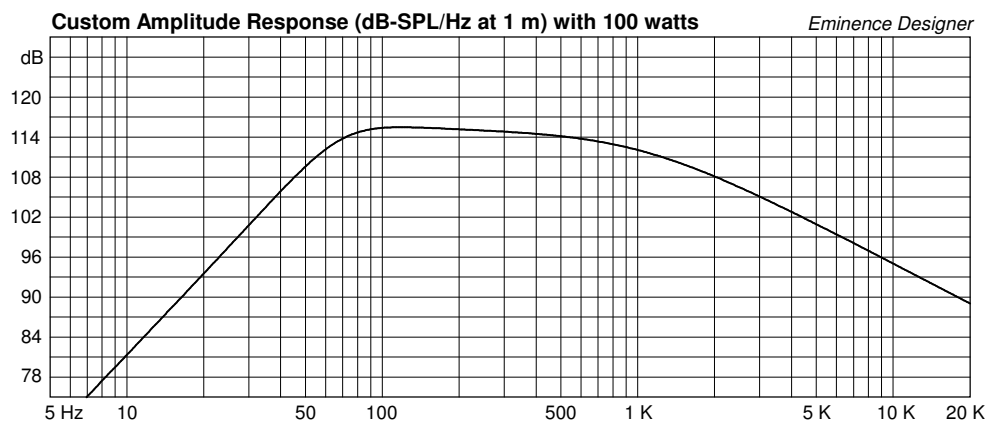
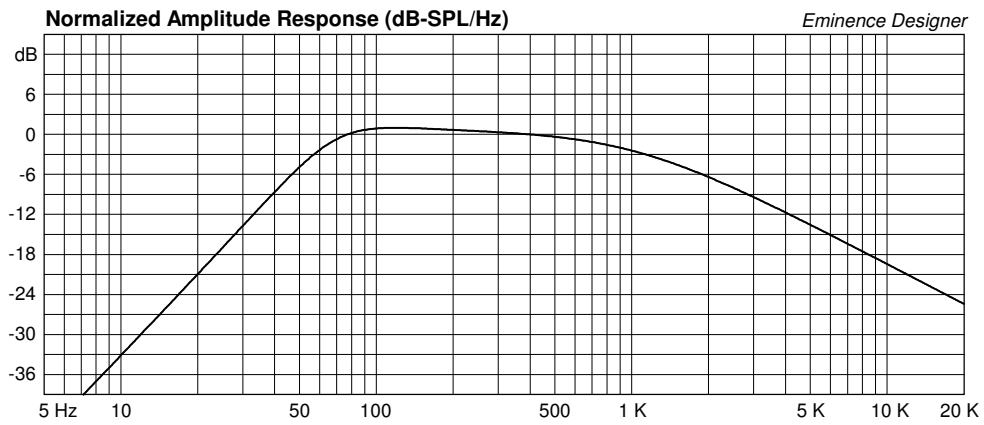
Side = 0.75 in

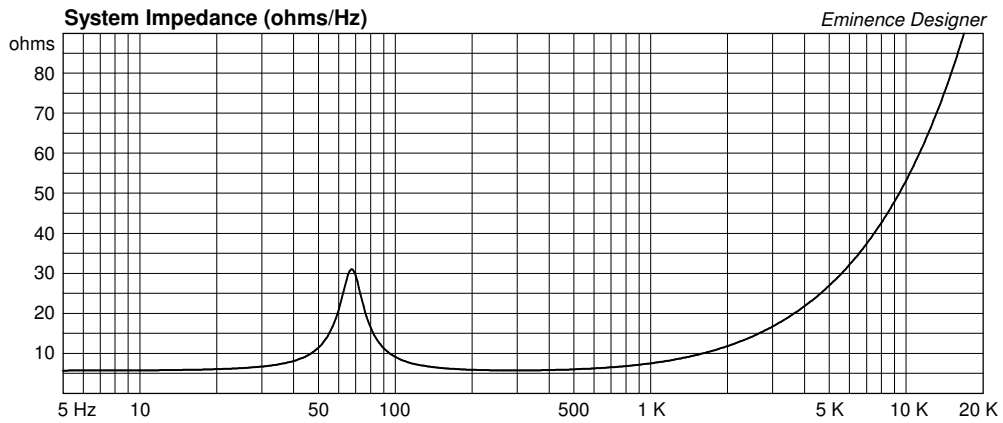
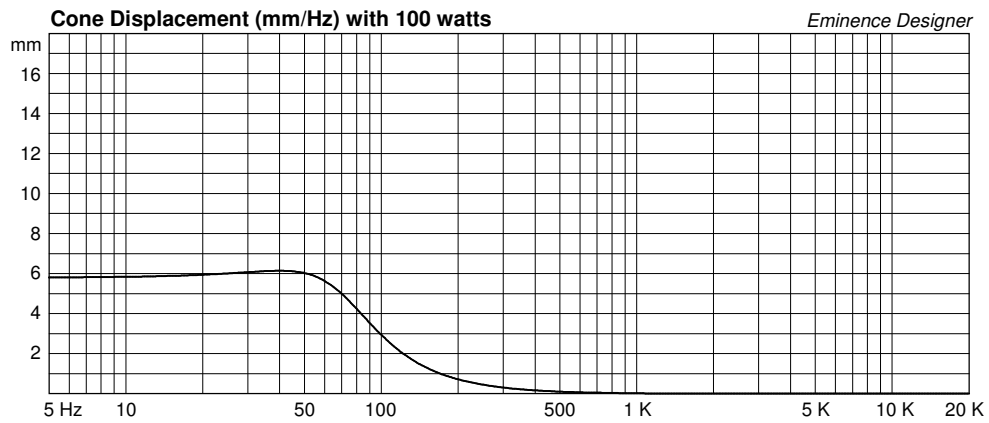
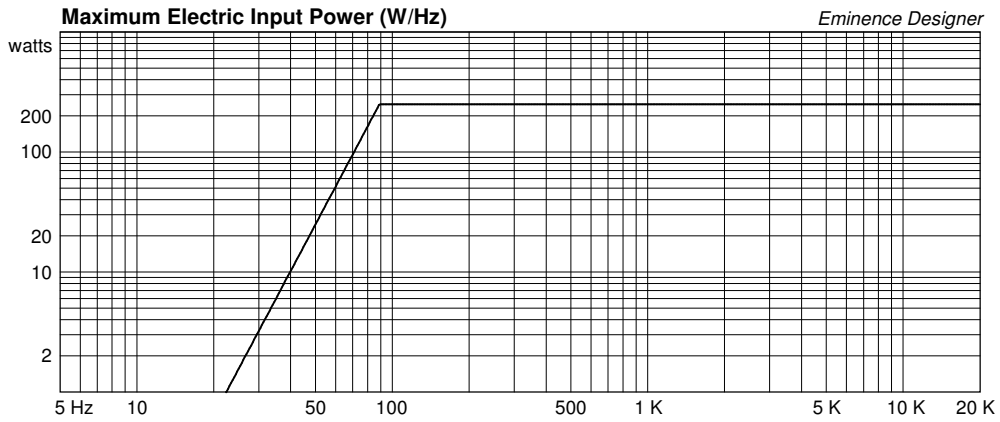


**Box Parts**

Box Shape: Optimum Square Prism  
1 Top, 1 Bottom: depth (c) = 11.01 in  
width (b) = 16.89, thickness = 0.75 in  
1 Front, 1 Back: height (a) = 24.9 in  
width (d) = 15.39, thickness = 0.75 in  
2 Sides: height (a) = 24.9 in  
depth (c) = 11.01, thickness = 0.75 in

--Driver Mounting--  
Mounting: Flush





# Legend BP122 Medium Vented Bass Guitar or PA

By Jerry McNutt, Eminence Speaker LLC

125 Watts, F3 at 42 Hz

Run full range for Bass Guitar or High pass at 35 Hz for PA, DJ, or ProSound.



## Box Properties

--Description--

Name:

Type: Vented Box

Shape: Prism, square (optimum)

--Box Parameters--

Vb = 3.6 cu.ft

V(total) = 3.798 cu.ft

Fb = 41.4 Hz

QL = 7

F3 = 41.5 Hz

Fill = normal

--Vents--

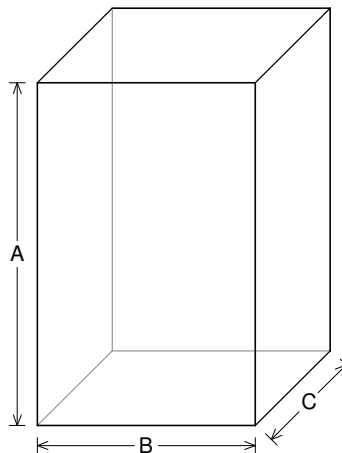
No. of Vents = 2

Vent shape = round

Vent ends = one flush

Dv = 4 in

Lv = 6.238 in



--External Dimensions--

A = 31.79 in

B = 20.22 in

C = 13.07 in

--Internal Dimensions--

A = 30.29 in

B = 18.72 in

C = 11.57 in

--Wall Thickness--

Front = 0.75 in

Side = 0.75 in

## Driver Properties

--Description--

Name: Legend BP122

Type: Standard one-way driver

Company: Eminence Speaker LLC USA

Comment: 12" Bass Guitar/Pro Woofer

--Configuration--

**No. of Drivers = 1**

--Mechanical Parameters--

Fs = 35.37 Hz

Qms = 9.26

Vas = 157.4 liters

Cms = 0.4 mm/N

Mms = 50.37 g

Rms = 1.21 kg/s

Xmax = 6.2 mm

Xmech = 12.4 mm

P-Dia = 258.9 mm

Sd = 532.4 sq.cm

P-Vd = 0.326 liters

--Electrical Parameters--

Qes = 0.57

Re = 5.66 ohms

Le = 0.84 mH

Z = 8 ohms

BL = 10.55 Tm

Pe = 250 watts

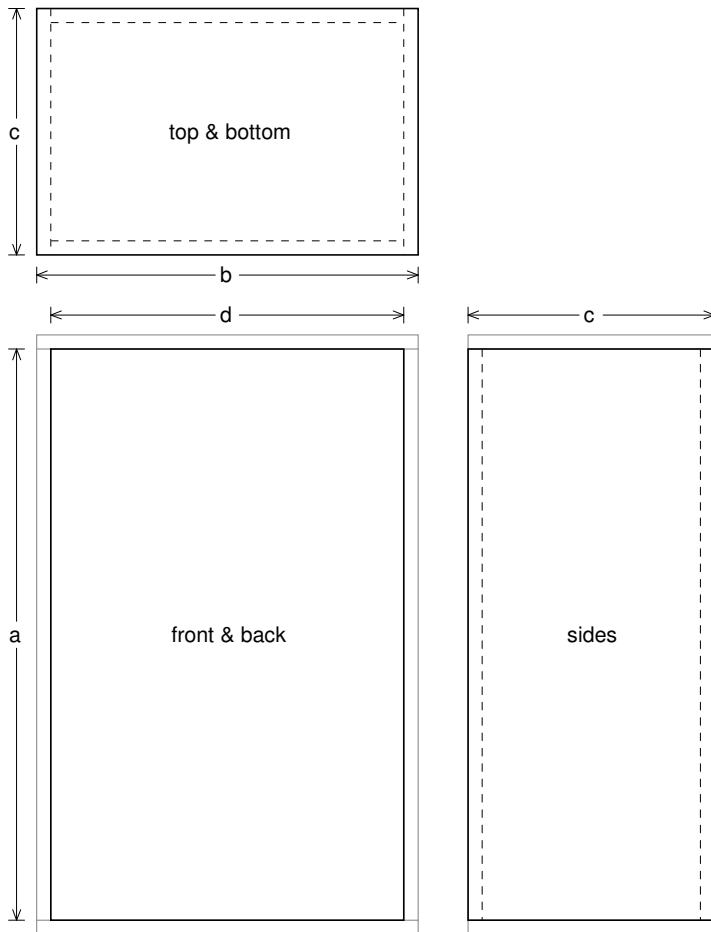
--Electromech. Parameters--

Qts = 0.54

no = 1.178 %

1-W SPL = 92.86 dB

2.83-V SPL = 94.36 dB



### Box Parts

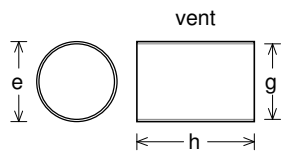
Box Shape: Optimum Square Prism  
1 Top, 1 Bottom: depth (c) = 13.07 in  
width (b) = 20.22, thickness = 0.75 in  
1 Front, 1 Back: height (a) = 30.29 in  
width (d) = 18.72, thickness = 0.75 in  
2 Sides: height (a) = 30.29 in  
depth (c) = 13.07, thickness = 0.75 in

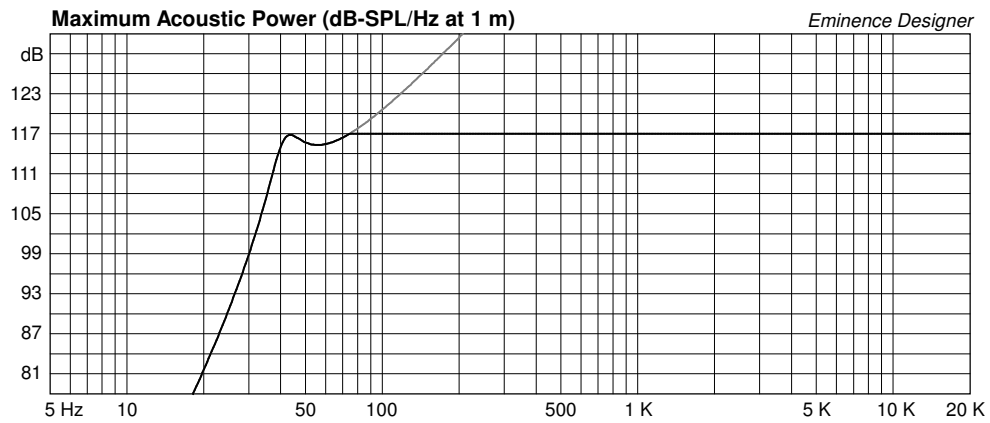
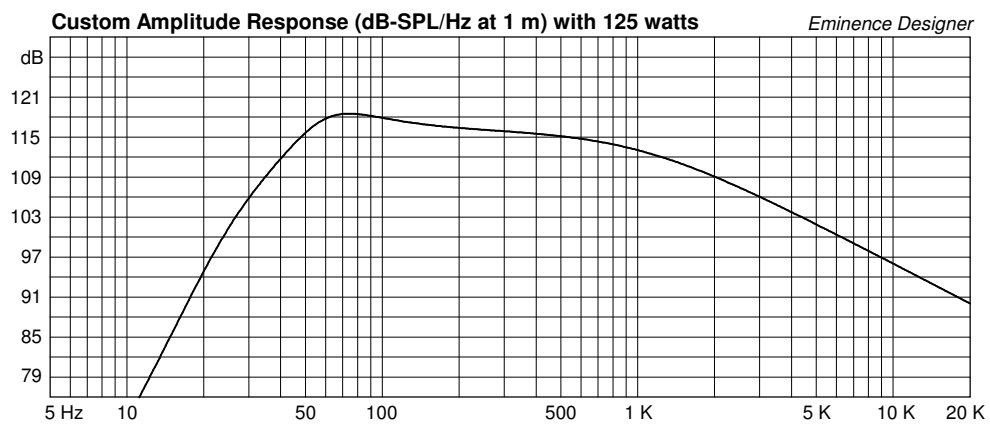
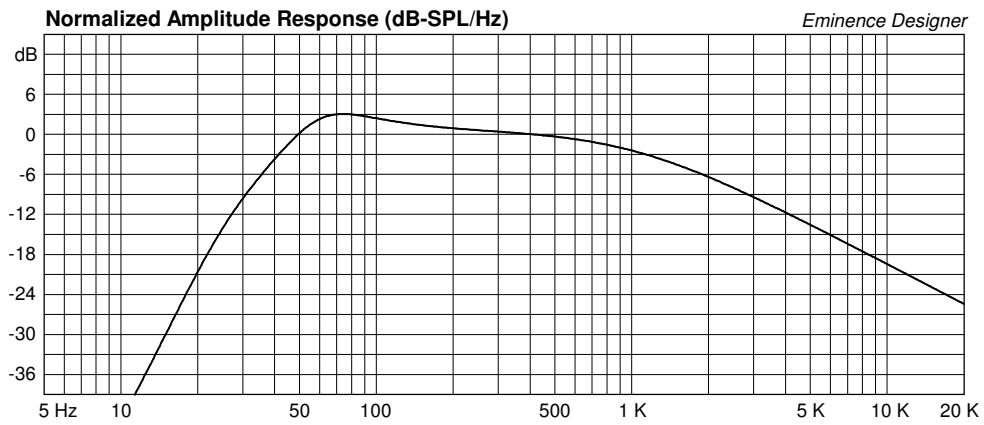
#### --Vent Parts--

2 Ducts: outside diameter (e) = 4.25 in  
inside diameter (g) = 4 in  
length (h) = 6.238 in

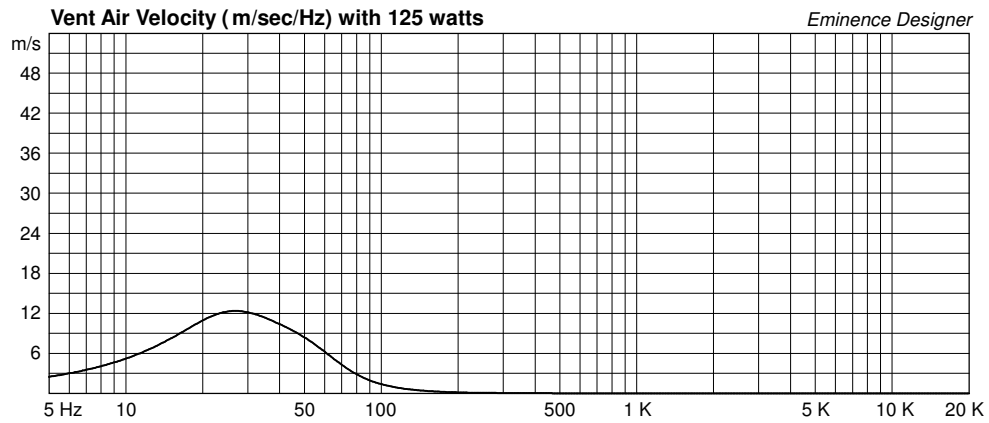
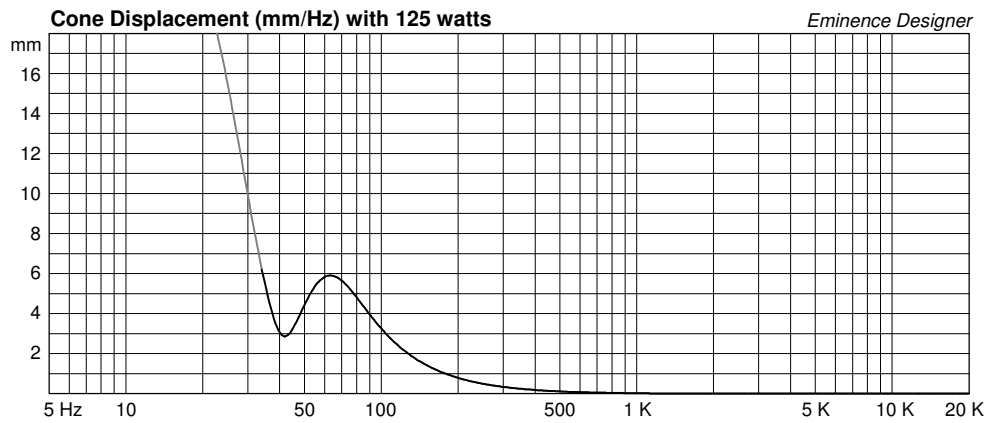
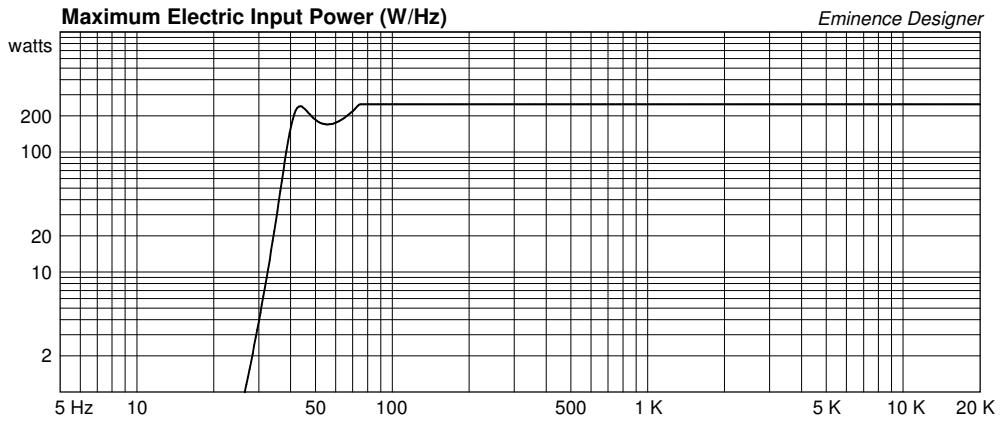
#### --Driver Mounting--

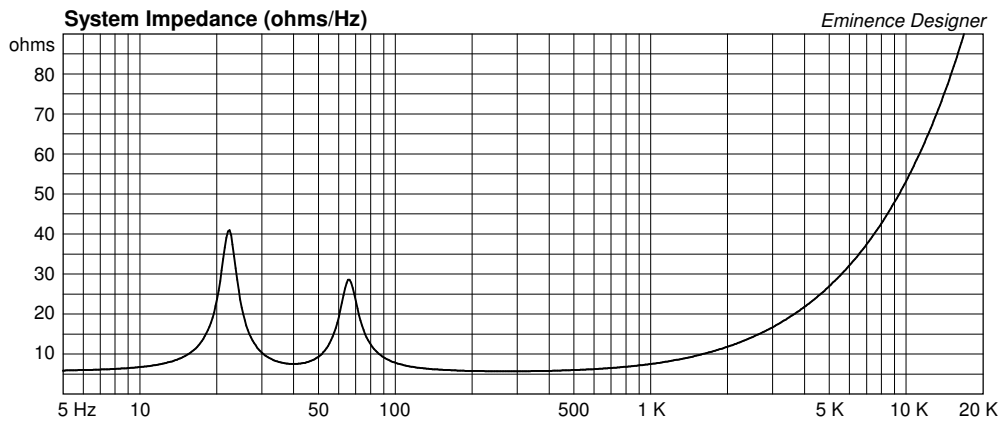
Mounting: Flush











# Legend BP122 Small Sealed Bass Guitar or PA

By Jerry McNutt, Eminence Speaker LLC

250 Watts, F3 at 70 Hz

Run full range for Bass Guitar or High pass at 65 for PA use.



## Box Properties

--Description--

Name:

Type: Closed Box

Shape: Prism, square

--Box Parameters--

Vb = 0.875 cu.ft

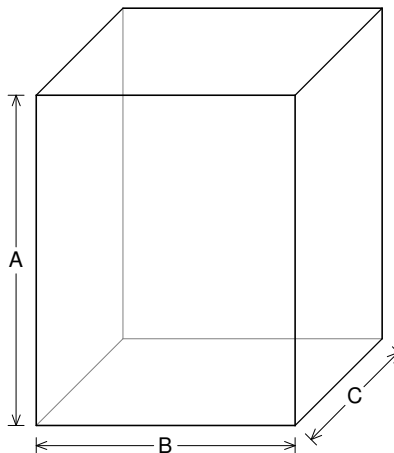
V(total) = 0.983 cu.ft

Qtc = 1.168

QL = 20

F3 = 70.35 Hz

Fill = normal



--External Dimensions--

A = 18.5 in

B = 14.5 in

C = 9.187 in

--Internal Dimensions--

A = 17 in

B = 13 in

C = 7.687 in

--Wall Thickness--

Front = 0.75 in

Side = 0.75 in

## Driver Properties

--Description--

Name: Legend BP122

Type: Standard one-way driver

Company: Eminence Speaker LLC USA

Comment: 12" Bass Guitar/Pro Woofer

--Configuration--

**No. of Drivers = 1**

--Mechanical Parameters--

Fs = 35.37 Hz

Qms = 9.26

Vas = 157.4 liters

Cms = 0.4 mm/N

Mms = 50.37 g

Rms = 1.21 kg/s

Xmax = 6.2 mm

Xmech = 12.4 mm

P-Dia = 258.9 mm

Sd = 532.4 sq.cm

P-Vd = 0.326 liters

--Electrical Parameters--

Qes = 0.57

Re = 5.66 ohms

Le = 0.84 mH

Z = 8 ohms

BL = 10.55 Tm

Pe = 250 watts

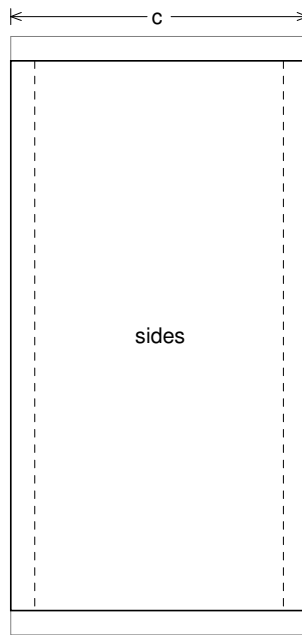
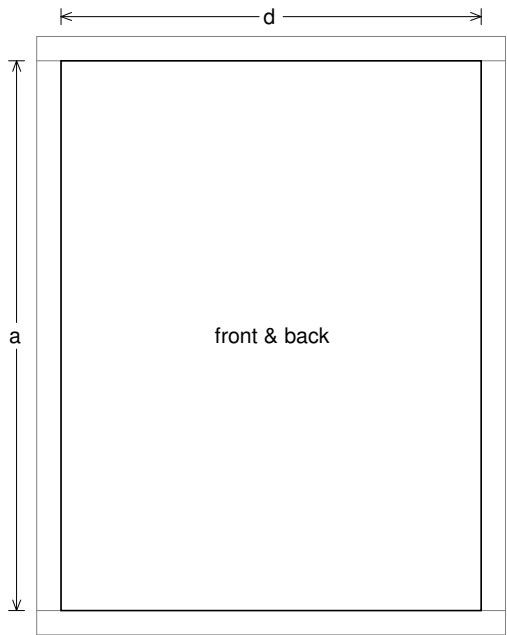
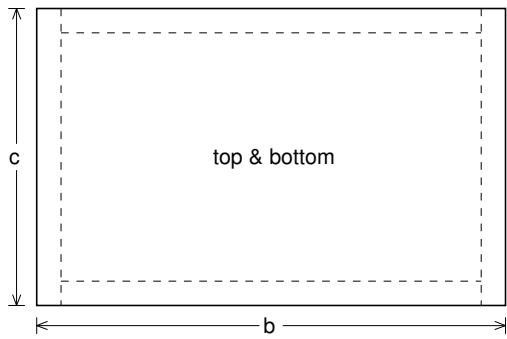
--Electromech. Parameters--

Qts = 0.54

no = 1.178 %

1-W SPL = 92.86 dB

2.83-V SPL = 94.36 dB



### Box Parts

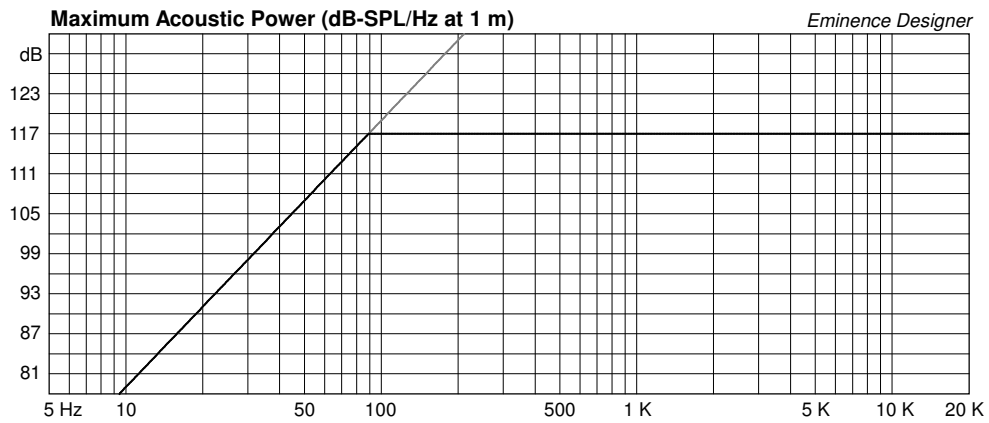
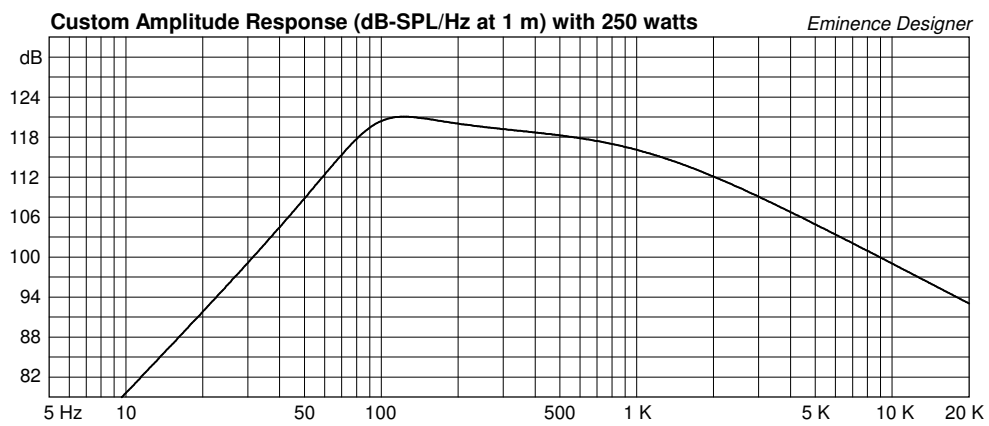
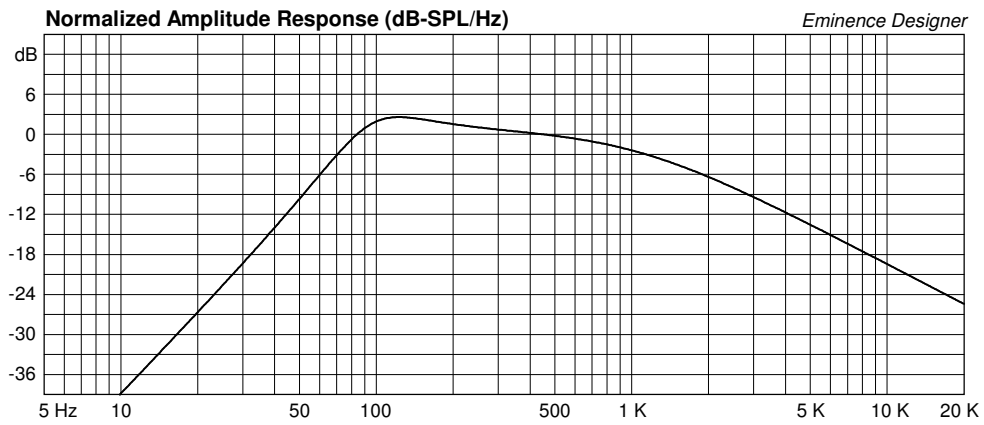
Box Shape: Square Prism

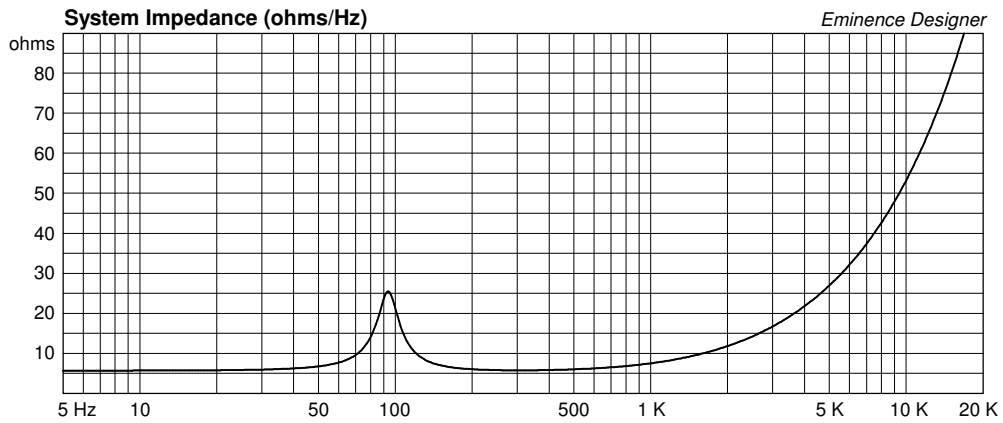
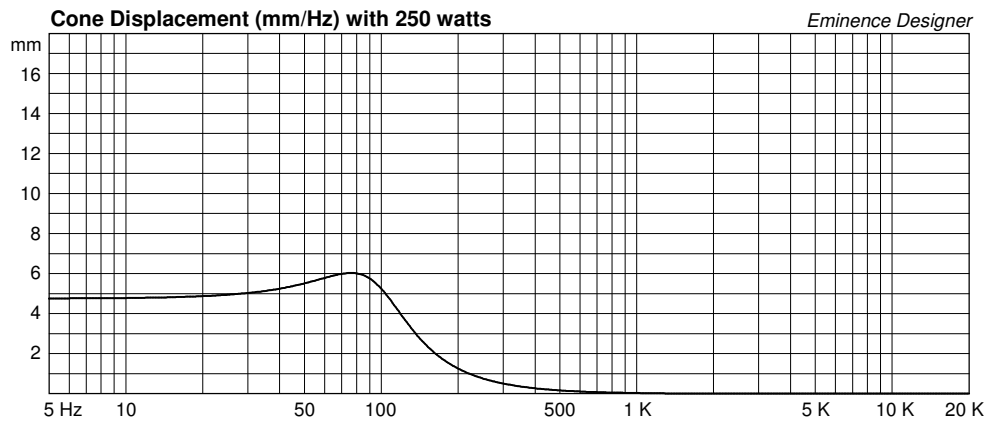
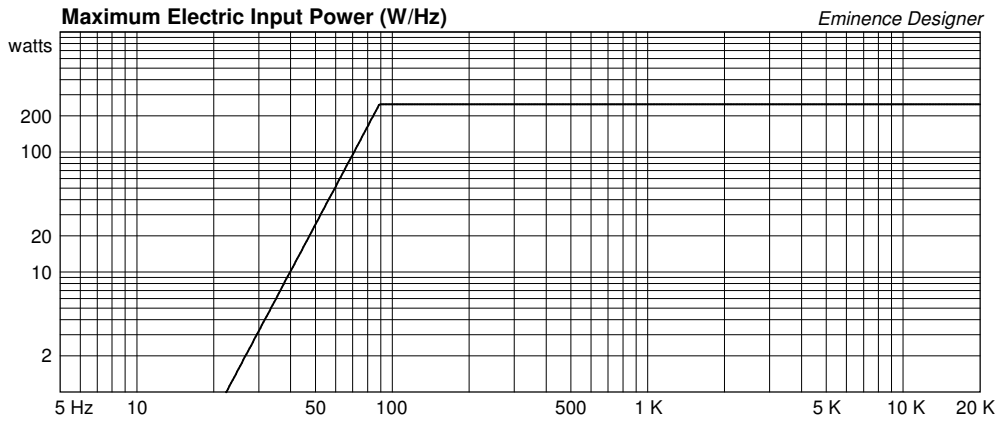
1 Top, 1 Bottom: depth (c) = 9.187 in  
width (b) = 14.5, thickness = 0.75 in

1 Front, 1 Back: height (a) = 17 in  
width (d) = 13, thickness = 0.75 in

2 Sides: height (a) = 17 in  
depth (c) = 9.187, thickness = 0.75 in

--Driver Mounting--  
Mounting: Flush





# Legend BP122 Small Vented Bass Guitar or PA

By Jerry McNutt, Eminence Speaker LLC

250 Watts, F3 at 52 Hz

Run full range for Bass Guitar or High pass at 45 for PA, DJ, or ProSound.



## Box Properties

--Description--

Name:

Type: Vented Box

Shape: Prism, square (optimum)

--Box Parameters--

Vb = 2.55 cu.ft

V(total) = 2.697 cu.ft

Fb = 58 Hz

QL = 7

F3 = 51.59 Hz

Fill = normal

--Vents--

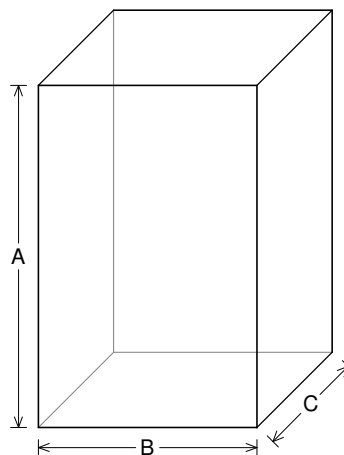
No. of Vents = 2

Vent shape = round

Vent ends = one flush

Dv = 4 in

Lv = 3.151 in



--External Dimensions--

A = 28.53 in

B = 18.2 in

C = 11.82 in

--Internal Dimensions--

A = 27.03 in

B = 16.7 in

C = 10.32 in

--Wall Thickness--

Front = 0.75 in

Side = 0.75 in

## Driver Properties

--Description--

Name: Legend BP122

Type: Standard one-way driver

Company: Eminence Speaker LLC USA

Comment: 12" Bass Guitar/Pro Woofer

--Configuration--

**No. of Drivers = 1**

--Mechanical Parameters--

Fs = 35.37 Hz

Qms = 9.26

Vas = 157.4 liters

Cms = 0.4 mm/N

Mms = 50.37 g

Rms = 1.21 kg/s

Xmax = 6.2 mm

Xmech = 12.4 mm

P-Dia = 258.9 mm

Sd = 532.4 sq.cm

P-Vd = 0.326 liters

--Electrical Parameters--

Qes = 0.57

Re = 5.66 ohms

Le = 0.84 mH

Z = 8 ohms

BL = 10.55 Tm

Pe = 250 watts

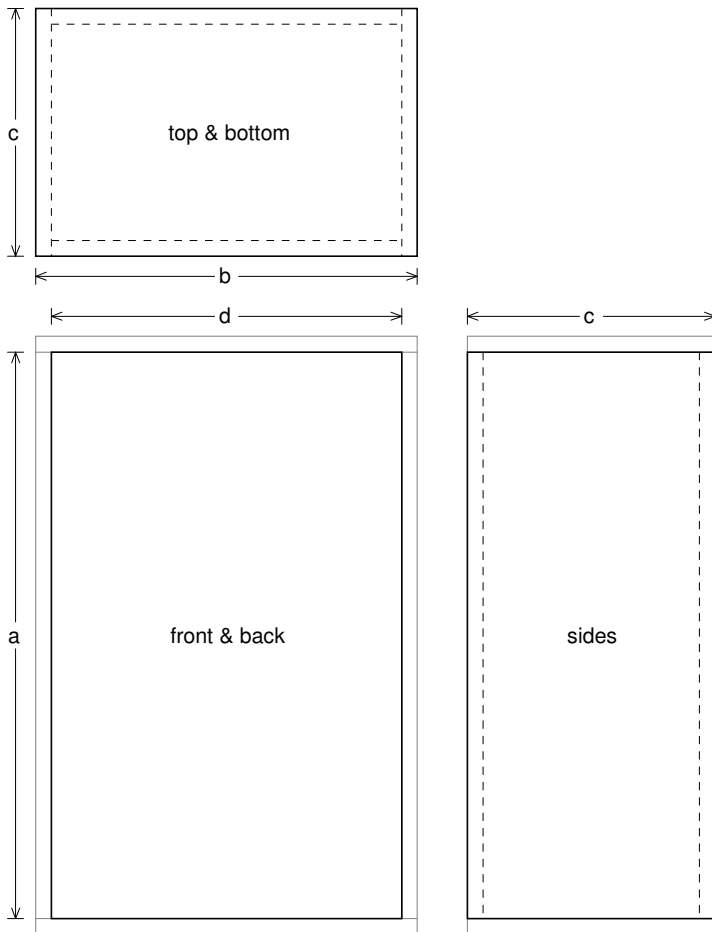
--Electromech. Parameters--

Qts = 0.54

no = 1.178 %

1-W SPL = 92.86 dB

2.83-V SPL = 94.36 dB



**Box Parts**

Box Shape: Optimum Square Prism  
1 Top, 1 Bottom: depth ( $c$ ) = 11.82 in  
width ( $b$ ) = 18.2, thickness = 0.75 in  
1 Front, 1 Back: height ( $a$ ) = 27.03 in  
width ( $d$ ) = 16.7, thickness = 0.75 in  
2 Sides: height ( $a$ ) = 27.03 in  
depth ( $c$ ) = 11.82, thickness = 0.75 in

*--Vent Parts--*

2 Ducts: outside diameter ( $e$ ) = 4.25 in  
inside diameter ( $g$ ) = 4 in  
length ( $h$ ) = 3.151 in

*--Driver Mounting--*

Mounting: Flush

