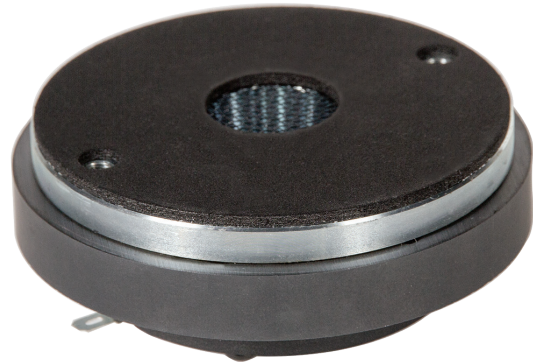


F151M-8

- SCREW-ON
- BOLT-ON



Despite its minute size, the Eminence F151M-8 ring radiator compression driver delivers monumental performance. Utilizing a phase plug design that improves the distribution of forces over the diaphragm surface results in a driver with lower distortion, smoother frequency response, and increased sensitivity as compared to conventional ring radiator designs.

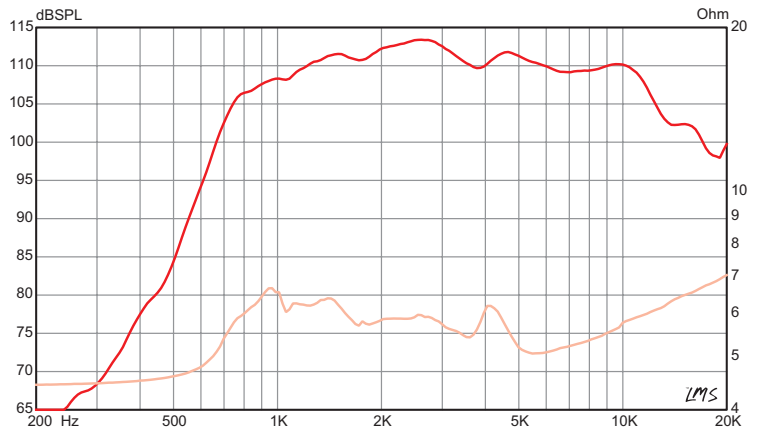
SPECIFICATION

Throat Size	1.0", 25.4 mm
Nominal Impedance*	8 Ω
Minimum Impedance	5.1 ohm @ 5.5 kHz
Power Rating*	45 W (AES)
Resonance	1.03 kHz
DC Resistance (Re)	4.1 Ω
Usable Frequency Range	1.8 kHz - 20 kHz
Recommended Crossover	1.8 kHz / 12 dB
Sensitivity*	108.9 dB
Magnet Material	Ferrite
Magnet Weight	15 oz, 0.43 kg
Voice Coil Diameter	1.5", 38.1 mm
Voice Coil Former	Polyimide
Diaphragm Material	Mylar

MOUNTING INFORMATION

Overall Diameter	3.94", 100.1 mm
Driver Volume Displaced	0.007 cu.ft., 0.2 liters
Depth	1.65", 41.9 mm
Net Weight	1.8 lbs., 0.82 kg
Shipping Weight	2.5 lbs., 1.12 kg
Mounting Thread	N/A
Mounting Holes Diameter	2X 1/4-20
Mounting Holes B.C.D.	3.00", 76.2 mm

FREQUENCY RESPONSE & IMPEDANCE CURVE*



* See footnotes on the following page for information regarding usable frequency range, nominal impedance, power rating and sensitivity.



From design and manufacturing to the stage or studio. Once you've experienced the performance of Eminence, you'll never accept anything else.

MISSION STATEMENT

Eminence is dedicated to providing the best Quality, Value and Service to meet our customers' needs.

FOOTNOTES

IMPEDANCE

Please consult www.eminence.com for specifications of models with alternative impedances.

POWER RATING

Multiple units exceed published ratings evaluated under EIA 426A specification while tested in a free-air, non-temperature-controlled environment. Multiple compression drivers exceeded published ratings evaluated under EIA-426A or AES specification while mounted on Eminence's H290, H290S, H14EA or H2EA horn in a non-temperature-controlled environment.

SENSITIVITY

The average output across the usable frequency range when applying 1W/1m into the nominal impedance. i.e: 2.83V/8Ω, 4V/16Ω. Eminence response curves are measured under the following conditions: All speakers are tested at 1W/1m using a variety of test set-ups for the appropriate impedance | LMS using 0.25" supplied microphone (software calibrated) mounted 1m from wall/baffle | 2 ft. x 2 ft. baffle is built into the wall with the speaker mounted flush against a steel ring for minimum diffraction | Yamaha P3500S amplifier | 2700 cu. ft. chamber with fiberglass on all six surfaces (three with custom-made wedges). Compression drivers were tested using a 2ft x 2ft baffle built into the wall with horn front mounted.

COAXIALS

BETA 8CX, 10CX, and 12CX are coaxial speakers with tweeter sold separately. Published usable frequency response contingent upon use of ASD:1001 HF Driver.

Prices, product cosmetics and specifications are subject to change without notice.

EMINENCE SPEAKER LLC

838 Mulberry Pike, Eminence, KY 40019



Follow us:

EMINENCE.COM

