

NEODYMIUM SERIES

DELTALITE® II 2510-4

Recommended for pro audio as a mid/hi or full-range and monitor. Also suited for bass guitar and works well in sealed or vented enclosures.



- | | | | |
|---|---|--|--|
| <input type="checkbox"/> Midrange | <input checked="" type="checkbox"/> Woofer | <input type="checkbox"/> Sealed Box | <input type="checkbox"/> Scoop Loading |
| <input checked="" type="checkbox"/> Midbass | <input type="checkbox"/> Subwoofer | <input checked="" type="checkbox"/> Vented Box | <input checked="" type="checkbox"/> Horn Loading |
| | <input checked="" type="checkbox"/> Bass Guitar | | |

SPECIFICATION

Nominal Basket Diameter	10", 254 mm
Nominal Impedance*	4 Ω
Power Rating**	
Watts	250 W
Music Program	500 W
Resonance	55 Hz
Usable Frequency Range	55 Hz – 3.5 kHz
Sensitivity***	96.5 dB
Magnet Weight	7 oz.
Gap Height	0.275", 7 mm
Voice Coil Diameter	2.5", 64 mm

THIELE & SMALL PARAMETERS*

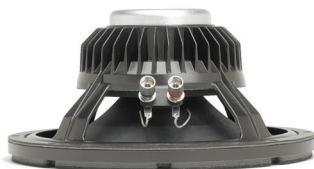
Fs	55 Hz
Re	3.46 Ω
Le	0.3 mH
Qms	7.92
Qes	0.4
Qts	0.39
Vas	1.92 cu.ft., 54.45 liters
Vd	147 cc
Cms	0.32 mm/N
BL	8.84 T-M
Mms	27 grams
EBP	135
Xmax	4.2 mm
Sd	350.1 cm ²
Xlim	8 mm

MOUNTING INFORMATION

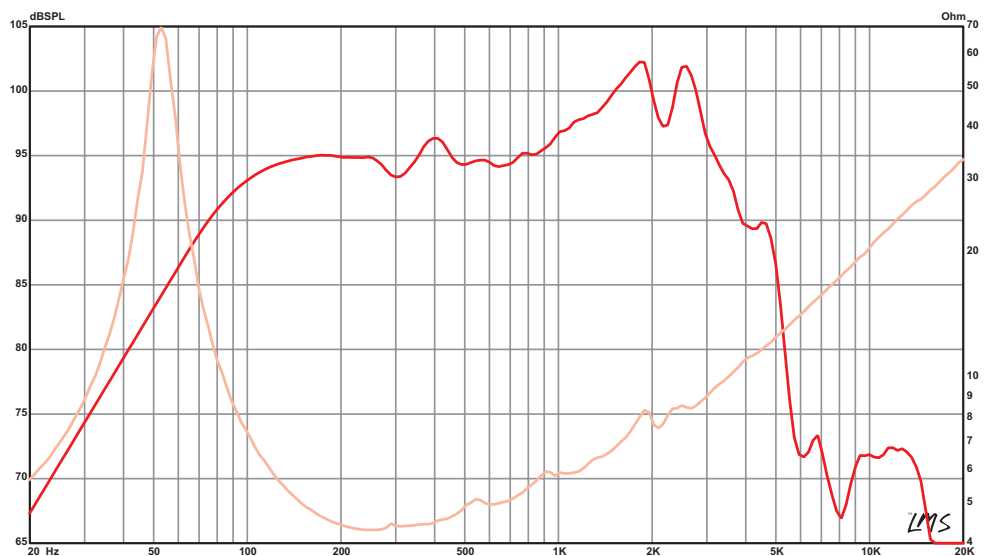
Recommended Enclosure Volume	
Sealed	N/A
Vented	24.24–45.31 liters, 0.86–1.6 cu.ft.
Driver Volume Displaced	0.026 cu.ft., 0.74 liters
Overall Diameter	10.25", 260.4 mm
Baffle Hole Diameter	9.15", 232.4 mm
Front Sealing Gasket	Yes
Rear Sealing Gasket	Yes
Mounting Holes Diameter	0.28", 7.1 mm
Mounting Holes B.C.D.	9.73", 247.1 mm
Depth	4.9", 124.5 mm
Net Weight	4.6 lbs, 2.09 kg
Shipping Weight	5.7 lbs, 2.59 kg

MATERIALS OF CONSTRUCTION

- Aluminum voice coil
- Polyimide former
- Neodymium magnet
- Vented core
- Die-cast aluminum basket/ heatsink
- Paper cone
- Cloth cone edge
- Solid composition paper dust cap



FREQUENCY RESPONSE & IMPEDANCE CURVE*





From design and manufacturing to the stage or studio. Once you've experienced the performance of Eminence, you'll never accept anything else.

MISSION STATEMENT

Eminence is dedicated to providing the best Quality, Value and Service to meet our customers' needs.

FOOTNOTES

- * Please consult www.eminence.com for specifications of models with alternative impedances.
- ** Multiple units exceed published ratings evaluated under EIA 426A specification while tested in a free-air, non-temperature-controlled environment.
- *** The average output across the usable frequency range when applying 1W/1m into the nominal impedance. i.e: 2.83V/8Ω, 4V/16Ω. Eminence response curves are measured under the following conditions: All speakers are tested at 1W/1m using a variety of test set-ups for the appropriate impedance | LMS using 0.25" supplied microphone (software calibrated) mounted 1m from wall/baffle | 2 ft. x 2 ft. baffle is built into the wall with the speaker mounted flush against a steel ring for minimum diffraction | Carver PM-120 amplifier | 2700 cu. ft. chamber with fiberglass on all six surfaces (three with custom-made wedges).
- **** BETA 8CX, 10CX, and 12CX are coaxial speakers with tweeter sold separately. Published usable frequency response contingent upon use of ASD:1001 HF Driver.
- ***** Multiple units exceeded published ratings evaluated under EIA-426A or AES specification while mounted on Eminence's H290, H290S, or H2EA horn in a non-temperature-controlled environment.
- *****The average on axis output across the entire usable frequency range when applying 1W/1m into the nominal impedance, i.e. 2.83V/8Ω, 4V/16Ω. Eminence response curves are measured under the following conditions: All speakers are tested at 1W/1m using a variety of test set-ups for the appropriate impedance | LMS using 0.25" supplied microphone (software calibrated) mounted 1m from wall/baffle | 2ft x 2ft baffle is built into the wall with horn front mounted | Carver PM-120 amplifier | 2700 cu.ft. chamber with fiberglass on all six surfaces (three with custom-made wedges).

Prices, specifications and product cosmetics are subject to change without notice.

EMINENCE SPEAKER LLC

838 Mulberry Pike, Eminence, KY 40019



Follow us:

EMINENCE.COM



[You Tube](#)